

rmAdiponectin

Recombinant Mouse Adiponectin

Adiponectin, also referred to as Acrp30, AdipoQ and GBP28 is a protein which is highly expressed in adipose cells.

Human Adiponectin was identified by Dr. Matuzawa, Osaka University, whereas mouse adiponectin was identified by Dr. Lodish, MIT. It forms trimer, hexamer, high molecular weight multimer in serum.

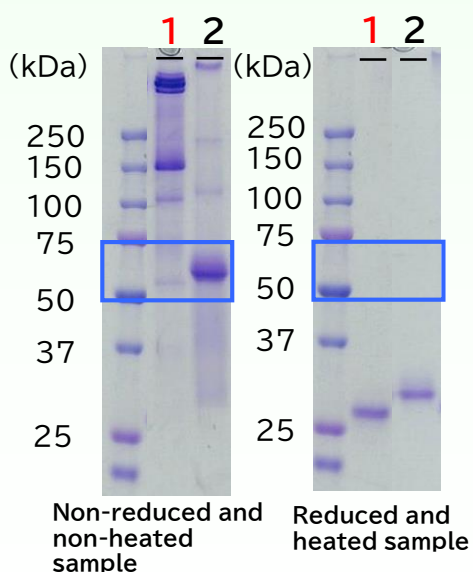
Adiponectin plays a role in physiological processes such as inflammation, anti diabetic, arteriosclerosis, energy homeostasis, and obesity. Plasma levels of adiponectin are reduced in obese humans, so it is regard as one of the new biomarkers.

Our product was expressed in CHO, and includes many high molecular weight forms.

Product features

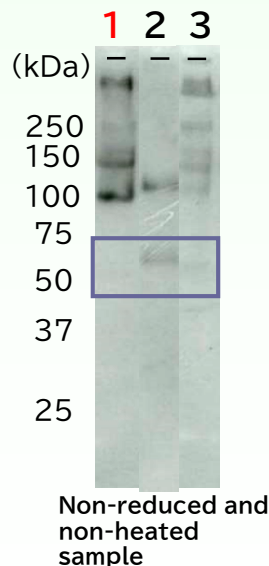
- ◆ The protein was expressed in mammalian cells.
- ◆ The product forms multimers as in the circulation, and is not fused with tags. (see as SDS-PAGE)
- ◆ The purity of the protein is above 90%. (see as SDS-PAGE)
- ◆ The product indicates similar structures to those in mouse serum. (see as Western Blot)

SDS-PAGE



1: Our Product
2: Product A (FLAG tag)

Western Blot



1: Our Product
2: Product B (FLAG tag)
3: mouse serum

Support For Metabolic Syndrome Research

OYC research reagents

Product features

Host	:CHO
Origin	:Mouse
Molecular mass	:> 28 kDa (monomer, predicted)
Concentration	:1 mg/mL
Purity	:> 90% (SDS-PAGE)
Endotoxin level	:< 0.5 EU/mg
Storage	:Frozen, below -70°C
* Avoid freeze and thaw cycles.	

Item	Catalog number	Packing size
Recombinant Mouse Adiponectin	47024000	100 µg

*For bulk inquiry, please contact us below.

*For research purposes only. Not for therapeutic or diagnostic use.

Related Products

Item	Catalog number	Packing size
Recombinant Human Adiponectin	47620000	100 µg
Anti-Human Adiponectin mAb (8A1)	47022000	500 µg
Anti-Human Adiponectin mAb (8B3)	47021000	500 µg
Anti-Human Adiponectin IgG	47023000	500 µg

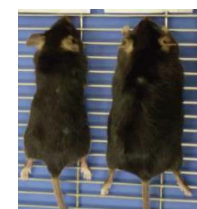
Commissions Examinations

We provide animal examinations using obese mouse.

Furthermore we measure biochemical substances such as insulin, leptin.

Laboratory Chow

- High-fat diet (F2HFD2)
- High-fat and sucrose diet; fat 30%(F2HFHSD)
- High-fat diet; fat 60%(HFD-60)



Left :control
Right :HFD-60

References

1. Maeda, K., et al. (1996): *Biochem, Biophys. Res. Commun.* 221: 286.
2. Scherer, PE., et al. (1995): *J. Biol Chem.* 270, 26746.
3. Waki, H., (2003) : *J. Biol Chem.* 278,40352.
4. Ohashi, K., et al. (2010): *J. Biol Chem.* VOL. 285, 6153.
5. Tonelli, J., et al.(2004): *Diabetes*.53: 1621.
6. Matsuda, M., et al.(2002): *J. Biol Chem.* 277, 37487.
7. Yamauchi, T., et al.(2007): *Nat. Med.* 13: 332.

Please contact the one that best suits your need.

ORIENTAL YEAST CO., LTD.

Corporate Headquarters (Tokyo, Japan)

URL : <https://www.oyc.co.jp/bio/>

E-mail : fbi@nisshin.com

Phone : +81-3-3968-1192

Fax : +81-3-3968-4863

OYC EU B.V.

(Rotterdam, The Netherlands)

URL : <https://www.oyceu.com/>

E-mail : info@oyceu.com

Phone : +31-10-4145777

Fax : +31-10-2134919

OYC Americas, Inc.

(Vista, USA)

URL : <https://www.oycus.com/>

Phone : +1-760-659-5943

Fax : +1-760-201-8950

ORIENTAL YEAST INDIA Pvt. Ltd.

(Mumbai, INDIA)

URL : <https://oycindia.com/>

E-mail : info@oycindia.com

Phone : +91-22-27717107

Fax : +91-22-27717107



ORIENTAL YEAST CO.,LTD.