

## rhLIF/rmLIF

### Recombinant Human Leukemia Inhibitory Factor Recombinant Mouse Leukemia Inhibitory Factor

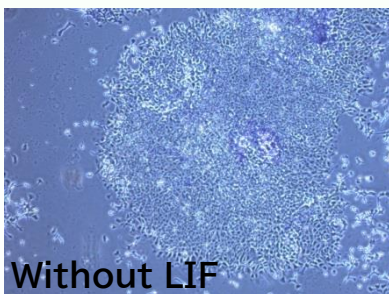
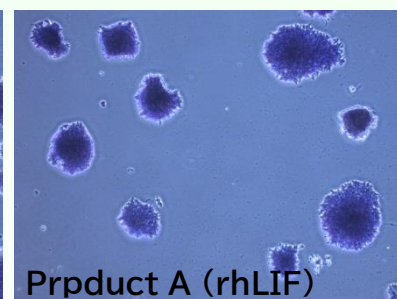
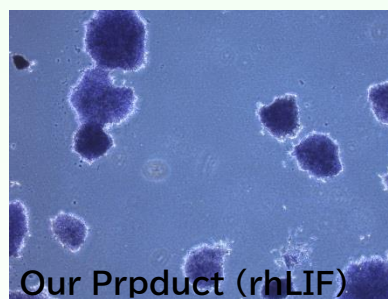
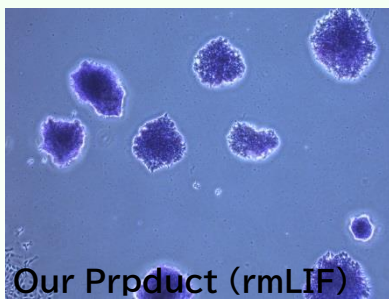
LIF is a protein that has differentiation-inhibitory activity for ES/iPS cells. Originally, LIF was found as a cytokine that inhibits proliferation of leukemia cells and induces their differentiation into macrophage. On the other hand, LIF has been reported to involve many more functions including embryo implantation, neural expansion, bone synthesis, thyroid function, blood cells proliferation.

| Item                  | Catalog number | Packing size |
|-----------------------|----------------|--------------|
| Recombinant Human LIF | 47076000       | 20 µg        |
| Recombinant Mouse LIF | 47080000       | 20 µg        |
|                       | 47081000       | 200 µg       |

\* For bulk inquiry, please contact us.

\* For research purposes only. Not for therapeutic or diagnostic use.

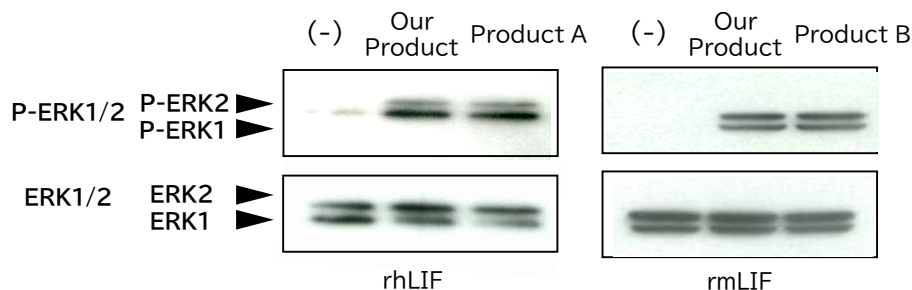
### Alkaline phosphatase activity of ES cells.



Mouse ES cells (EB3) were cultured and maintained in medium containing LIF on gelatin coating plate. After fixation, the cells were evaluated based on alkaline phosphatase staining. Upper panel, EB3 cells cultured and maintained in medium with 10 ng/mL of LIF.

Lower panel, EB3 cells cultured and maintained in medium without LIF.

## ERK phosphorylation activity.



24hrs after from seeding of  $1 \times 10^5$  3T3-L1 cells, culture medium was changed to serum-free medium. After further 24 hrs, the cells were cultured in medium containing 10 ng/mL of LIF for 10 min. Cells were collected and subjected to Western blotting using phospho-ERK1/2 antibody.

## Related products

| Item                      | Catalog number | Packing size         |
|---------------------------|----------------|----------------------|
| Recombinant Human FGF1    | 47078000       | 100 $\mu$ g          |
| Recombinant Human FGF2    | 47079000       | 100 $\mu$ g          |
| Human Laminin-3A32 (Lm5A) | 47200000       | 2 $\mu$ g            |
|                           | 47201000       | 2 $\mu$ g $\times$ 5 |

## References

- Hilton D. and Gough M. (1998). Cytokines, chapter 20, 277-288. Academic Press Limited.
- Miyaoka Y. Tanaka M, Naiki T, Miyajima A(2006). J Biol Chem.281(49):37913-20.
- Laurence Dahéron1, Sarah L. Opitz1, *et al.* (2004)STEM CELL.S22(5):770-778
- Jessica C Hogan and Jacqueline M Stephens(2005) J Endocrinol.185,485-496
- Stephens JM,Lumpkin SJ *et al.*(1998) J Biol Chem.;273(47):31408-16.
- Gafni O, Weinberger L *et al.*(2013) Nature;504(7479):282-6.

Please contact the one that best suits your need.

### ORIENTAL YEAST CO., LTD.

Corporate Headquarters (Tokyo, Japan)  
 URL : <https://www.oyc.co.jp/bio/>  
 E-mail : [fbi@nisshin.com](mailto:fbi@nisshin.com)  
 Phone : +81-3-3968-1192  
 Fax : +81-3-3968-4863

### OYC EU B.V.

(Rotterdam, The Netherlands)  
 URL : <https://www.oyceu.com/>  
 E-mail : [info@oyceu.com](mailto:info@oyceu.com)  
 Phone : +31-10-4145777  
 Fax : +31-10-2134919

### OYC Americas, Inc.

(Vista, USA)  
 URL : <https://www.oycus.com/>  
 Phone : +1-760-659-5943  
 Fax : +1-760-201-8950

### ORIENTAL YEAST INDIA Pvt. Ltd.

(Mumbai, INDIA)  
 URL : <http://oycindia.com/>  
 E-mail : [info@oycindia.com](mailto:info@oycindia.com)  
 Phone : +91-22-27717107  
 Fax : +91-22-27717107