

Certificate of Analysis (記載例)

Description

Product Name:	3D-RPTEC	Lot Number:	102N0502403
Catalog Number:	NCP02RP	Culture Vessel:	96 well V-bottom Plate Ultra-Low Attachment Surface

Viability & Phenotypic Characterization

Viability:	97.7 %	Cell Morphology:	Pass
OAT1 expression:	Positive	P-gp expression:	Positive

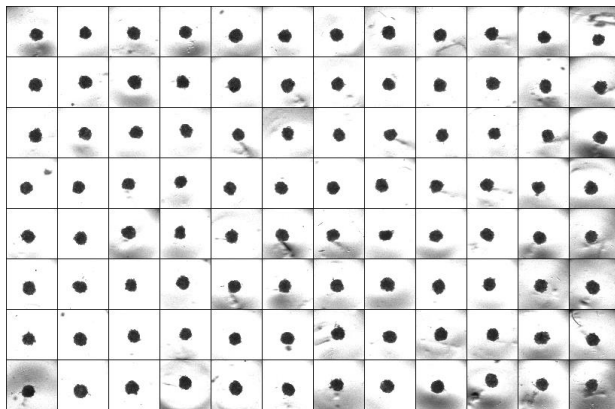
Donor Information

Cell Name:	human Renal Proximal Tubule Epithelial Cells		
Lot Number:	18TL117405	Age/ Sex:	57 / Male
Race	Asian	Viability:	89 %
HIV/ HBV/ HCV:	Negative	Mycoplasma:	Negative

These cells were isolated from donated single healthy human tissue after obtaining permission for their use in research applications by informed consent.

Personal information about the donor of this cell product was anonymized.

Confirmation of Cells



Photographing Date:

(2024-11-25)

Quality Control Review: _____

Date: _____

FOR RESEARCH USE ONLY. NOT FOR DIAGNOSTIC OR THERAPEUTIC PROCEDURES